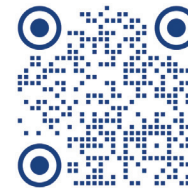




## About The High Road

The High Road is a long-term initiative of BNRC, made possible by generous donors and land partners. Primarily a recreational route for hikers, The High Road complements many types of outdoor recreation while supporting local businesses that serve visitors and residents. By linking town to town and town to trail, The High Road significantly broadens outdoor accessibility for all Berkshire communities.

This is the first High Road route to open. For current route information visit [bnrc.org/the-high-road](http://bnrc.org/the-high-road) or scan the QR code.



# THE HIGH ROAD

## Yokun Ridge & Connecting Trails

Pittsfield  
Lenox

## Yokun Ridge & Connecting Trails

The Yokun Ridge Trail and connecting trails comprise 10+ miles of High Road routes through recreation and conservation lands along picturesque Yokun Ridge. Hikers can explore the trails with outstanding vistas and diverse habitats, linking Pittsfield to Lenox. The entire route is open to hiking. It crosses properties of several different owners and the allowed uses vary on those segments.

### Trailhead Parking

- Bousquet Mountain, Dan Fox Drive
- Mass Audubon Pleasant Valley Wildlife Sanctuary (small fee for entrance may apply; comfort, and visitor facilities available)
- Kennedy Park trailheads (note High Road routes are not signed)
- Kripalu (use designated High Road parking at North Gate House, #35 Richmond Mountain Road, Lenox)
- Lenox Village Municipal Parking (connects to Kripalu by sidewalk on West Street)

**Allowed uses on The High Road:** The Yokun Ridge High Road route is primarily for hikers. Dogs and bikes are only allowed on portions of the route. Through-hikers from Bousquet to Lenox may not bring dogs or bikes. Where dogs are allowed, they **MUST** be leashed and all waste removed. Please respect the rules and guidelines of each of our land partners while enjoying The High Road.

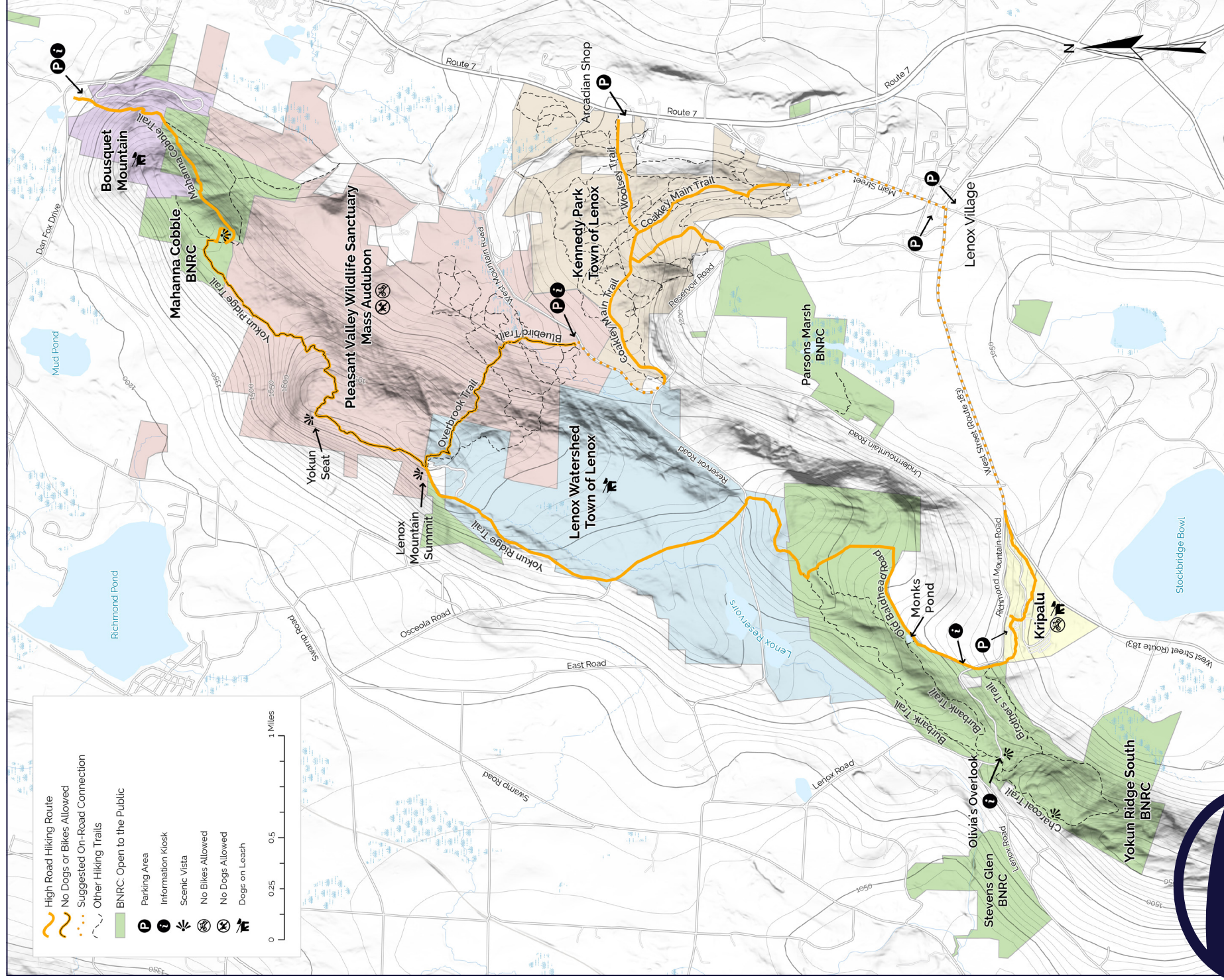
THE HIGH ROAD PARTNERS

**BOUSQUET MOUNTAIN** **MILL TOWN**  
**Arcadian Shop**  
**Kripalu**  
**Mass Audubon**  
**Berkshire Natural Resources Council**

### Berkshire Natural Resources Council

309 Pittsfield Road, Suite B | Lenox MA 01240 | 413-499-0596  
[bnrc.org](http://bnrc.org)





**This High Road route includes trails within BNRC Reserves, Mass Audubon's Pleasant Valley Wildlife Sanctuary, the Town of Lenox Watershed, and Kripalu Center for Yoga & Health.** There is wayfinding signage along the High Road route. The trail map suggests connections further into Lenox Village by sidewalk and trail.

**Bousquet Mountain** (northernmost trailhead): Steep climb (southbound) or descent (northbound) crossing ski slopes.

**Mahanna Cobble:** Footpath with switchbacks, superb view, and rest spot at summit.

**Pleasant Valley:** The **Yokun Ridge Trail** is a ridgeline hike with moderate elevation changes and expansive views at **Yokun Seat** and **Lenox Mountain**. **Bluebird** and **Overbrook Trails** provide access to Lenox Mountain Summit. From the trailhead you can connect to **Kennedy Park** and the **Lenox Village** by road and trail.

**Lenox Watershed:** Wide woodland trails with moderate elevation changes.

**Yokun Ridge South** (BNRC): Footpath and wide woodland path with moderate elevation change via **Old Baldhead Road** that takes you past Monks Pond. The **Burbank Trail** offers an alternative route to Monks Pond and a connection to Olivia's Overlook, a popular scenic vista.

**Kripalu** (southernmost trailhead): Short, easy woodland trail with an option to walk through the beautiful campus and into Lenox Village by following West Street along a sidewalk.